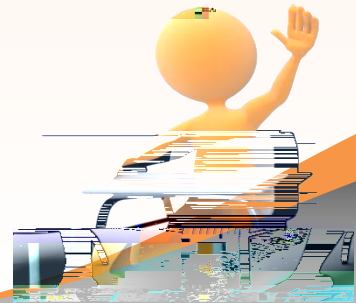
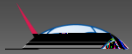


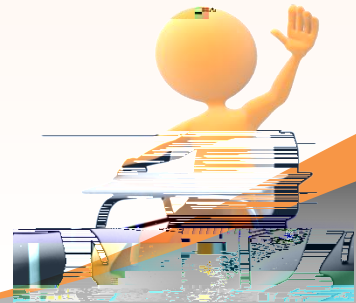
Academy
empowering minds



- Background – ITU Academy.
- Why Training Needs Analysis?
- Design Criteria
- Implementation Schedule
- Expectations

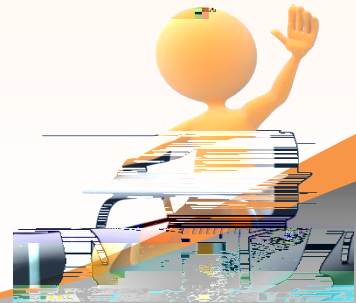


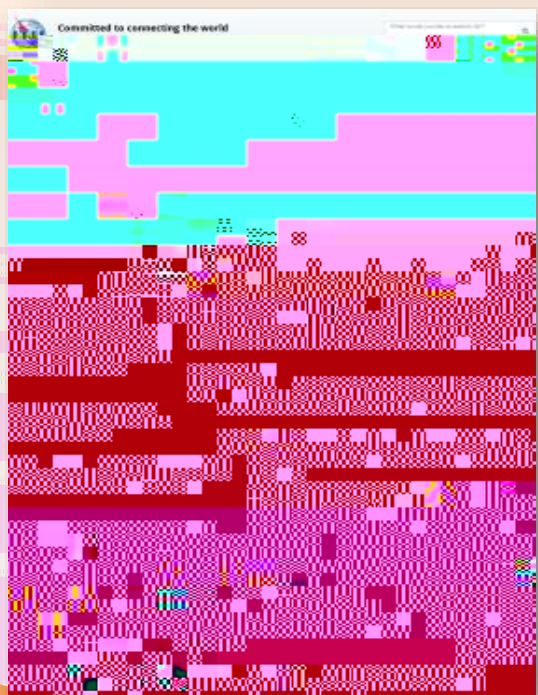
- Brings together all human capacity-building activities across the ITU.
- Is a single point of entry for all ITU human capacity-building resources.
- Harmonise and integrate all existing ITU training services and to extend the portfolio.





1. Telecommunications and ICT service providers.
2. Sector regulators.
3. Sector policy-makers (government departments).
4. Others Institutions.

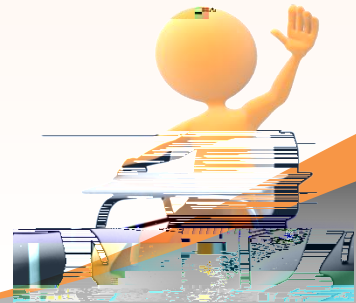


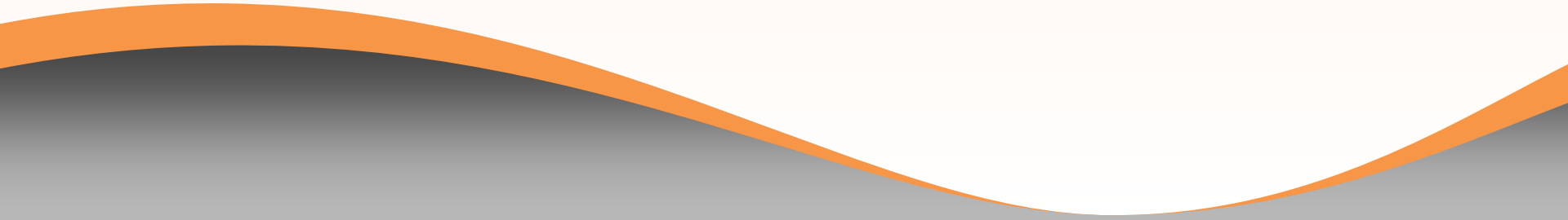


Based on the categories.

and comprise 3 main core

- Commercial operations.
- Technical operations.
- Enterprise management.



- Questionnaire Design Complete :
<http://www.itu.int/en/ITU-D/Capacity-Building/Pages/Survey-tna.aspx>.
 - Pilot Test: Under way : 75 sample.
 - Completion Date:.
- 

Pilot ends June
2013

Post Pilot
Evaluation by end
of July 2013

Tool ready for
global rollout
September 2013

